



# CONSTRUCTION OUTREACH

**Laurel Papadopoulos, Chief of Design**

88 CEG/CENM Wright-Patterson AFB, OH

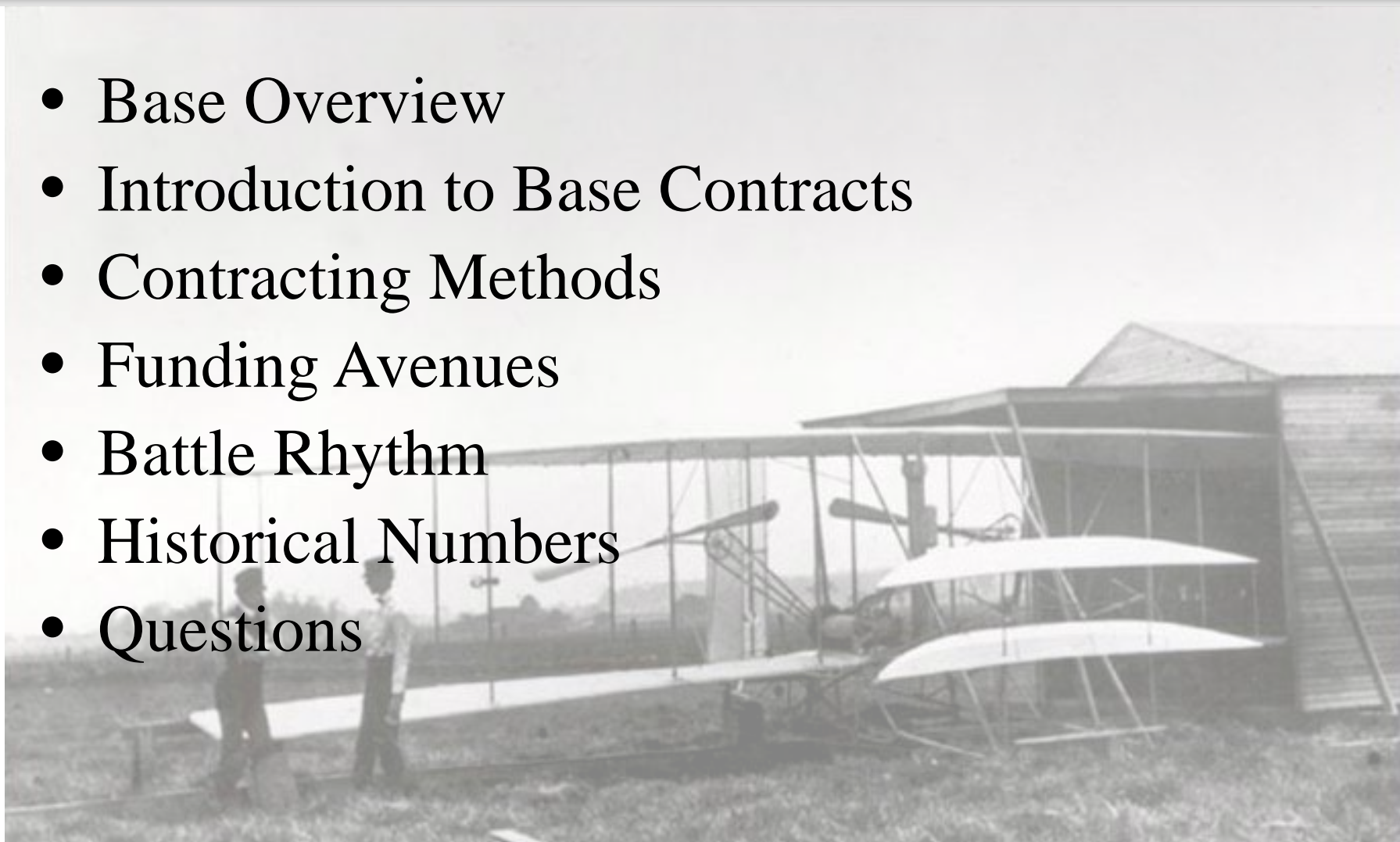
(937) 656-3592





# AGENDA

- Base Overview
- Introduction to Base Contracts
- Contracting Methods
- Funding Avenues
- Battle Rhythm
- Historical Numbers
- Questions





## BASE OVERVIEW - STATISTICS

- Land Area 8,145 Acres
- Buildings 17.2M SQ FT  
604 Facilities
- Housing 100 Units  
1536 Privatized Units
- Paved Roads 128 Miles
- Airfield Pavements 433 Acres  
12,600 ft runway
- Utilities 1,200 miles of mains
- Work Force 27,000 Military/Civilian/Contractor





# INTRODUCTION TO BASE CONTRACTS

- PZIO – Base Contracting
- 88<sup>th</sup> CEG – Civil Engineering
- Army Corps of Engineers – Resident Office and Louisville District
- AFICA – Mandatory Roof and Furniture Contracts, Floor Covering Coming
- AFCEC – Centralized AF Project Funding and Contracts
- DLA – Including Prime Vendor Contract through Supply Corps
- GSA





# CONTRACT METHODS

- Request for Proposal (RFP)/Invitation for Bid (IFB)
  - Design Bid Build
  - Typically \$500K to \$5M
- Multiple Award Construction Contract (MACC)
  - Design Build or Design Bid Build
  - Typically \$200K to \$5M
- Simplified Acquisition of Base Engineer Requirements (SABER)
  - Typically up to \$200K
- Indefinite Delivery Indefinite Quantity (IDIQ)
  - Pavements
  - Roofing
  - Airfield Pavements
  - Flooring





# CONTRACT METHODS

- Corps of Engineers
  - Request for Proposal (RFP)
  - Multiple Award Task Order Contract (MATOC)
- Prime Vendor (PV)
  - Multiple Restrictions, mainly material/labor split
- Air Force Installation Contracting Agency (AFICA)
  - Roofing and Furniture, Floor Coverings coming





## FUNDING AVENUES

- Air Force Civil Engineer Center (AFCEC)  
Centralized Funding – Air Force Comprehensive Asset Management Plan (AFCAMP)
- MILCON Funding – Congressionally approved
- Wright-Patterson Air Force Base Customer Funding
- 88<sup>th</sup> Civil Engineering Group (CEG) Funding





## BATTLE RHYTHM

- Customer Final Call FY18: 29 December 2017
- AFCAMP Construction Task Order: End of Apr
- Large influx of RFP/MACC Projects: Apr-Jul
- Large influx of SABER/IDIQ projects: Jun-Aug
- Award 80% of projects: 30 Jun
- End of Year: 30 Sep







# HISTORICAL NUMBERS

TYPE	FY14	FY15	FY16	FY17
FFP	\$6.3M	\$7.2M	\$28.7M	\$20.2M
A-E	\$3.8M	\$2.1M	\$6.1M	\$10M
IDIQ				
Pavement	\$3.7M	\$1.2M	\$3.3M	\$1.5M
Roof	\$2.7M	\$1.2M	\$2.3M	\$1.4M
Flooring	\$511K	\$759K	\$526K	\$770K
Airfield	\$881K	\$1.1M	\$534K	\$285K
Marking	\$254K	0	\$136K	0
SABER	\$21.6M	\$13.5M	\$16.1M	\$7.8M
PV	\$82K	\$1.2M	\$1.5M	\$58K
CoE	\$19.2M	\$44.8M	\$9.7M	\$10.5M
MILCON	0	\$26.2M	\$10M	\$12.4M
Furniture	\$4.3M	\$944K	\$870K	\$1.6M





# CONCLUSION

Questions?

